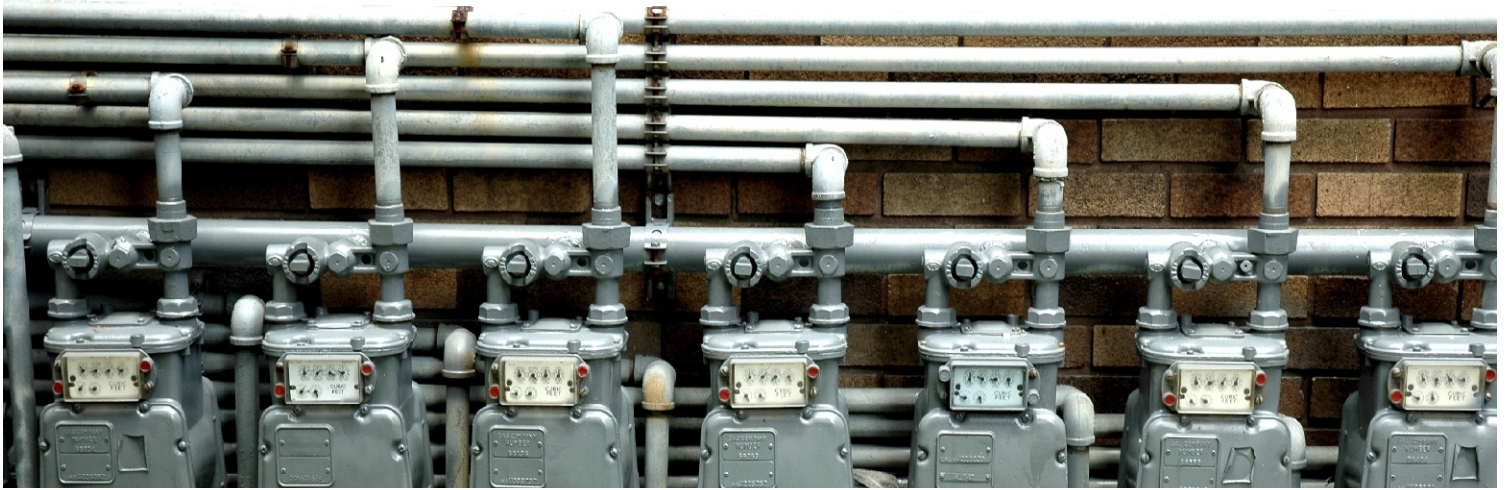


FUELING BUSINESS

Insurance for the Natural Gas Industry



Fairmont Specialty has been one of the nation's leading insurers since 1923 and has been protecting the Energy Industry for over fifty years. Fairmont's mission and its commitment to clients has not changed since day one - we will provide our insureds and their agents with the most innovative and cost effective risk management and insurance programs, which are responsible to the needs of the municipally-owned or investor-owned Natural Gas Utility.

What has changed over the years is Fairmont's constantly expanding array of services to our customers. Each customer is supported by a team of experienced and dedicated underwriting, loss control, claims and marketing professionals. Their job is to work with you to identify and assess your exposures to loss, implement effective loss control strategies, set coverage objectives and design an insurance program best suited to your needs.

Coverages: Comprehensive property and casualty coverage for the operation of Natural Gas Utilities may include: General Liability, Comprehensive Auto Coverage, Umbrella Liability, Property Protection and Inland Marine Coverages.

CLAIMS

24-Hour toll-free number 1-800-392-1970
Nationwide network of independent adjusters
Prompt and fair claims settlement

COMPLIANCE ASSISTANCE

Professional assistance with your various
regulatory needs

EMPLOYEE SAFETY EDUCATION/TRAINING

Fairmont's video safety library
Safety meeting participation

LOSS CONTROL

Regular on-site loss control engineering; the first step in ensuring accurate pricing and underwriting of your business
Exposure evaluations and customized site recommendations
Risk management counseling to help you reduce your loss potential
Claim reviews and countermeasure safety action plans
24-hour partnership and resource in safety with 11 regionalized loss control representatives

"OUR FOCUS IS YOUR BUSINESS"

Marketed exclusively through Willis Programs.



Willis

603-334-3000

Fairmont

Specialty

a division of **CrumForster**

